

22ND ANNUAL

Symphony of Peace Prayers

a global celebration of harmony and oneness



In the foothills of Mount Fuji, prayers for peace from the world's religions converge with humanity's hopes for a world of peace and harmony, in this unique annual celebration.



Whether on your own, with children, family, or friends, all are welcome at Fuji Sanctuary.

Prayers for peace that transcend all boundaries of religion and nationality.



First held in 2005, the SOPP has become a worldwide event, with celebrations taking place in locations across the globe.

Together in one place, at one time, sharing in thoughts and prayers of peace.



SUNDAY, MAY 17, 2026
12:00 - 2:30 pm (Gates open at 9 am)

Held at **Fuji Sanctuary, Fujinomiya-city, Shizuoka, Japan**
Hosted by **Byakko Shinko Kai**

symphonyofpeaceprayers.com • sopp@byakko.org

Free Admission

Participants arriving by car will need a parking pass. Please inquire via email.

What is the SOPP?

1. PRAYING WITH THE RELIGIONS OF THE WORLD:

Peace prayers from **Christianity** **Islam** **Judaism**
Buddhism **Shintoism** **Hinduism**



2. PRAYERS FOR PEACE IN EACH COUNTRY:

As participants offer wishes for peace in every country and region of the world, our prayers link together to form a powerful field of consciousness. In this moment, enveloped by the sound of Japanese taiko drums, we feel the pulse of the Earth and the resonance of the universe.

FOOD TRUCK STATION

Open 9:30-3:00, or until sold out

Cafe Puerto

Burgers, drinks, and sweets



Aozora Pizza

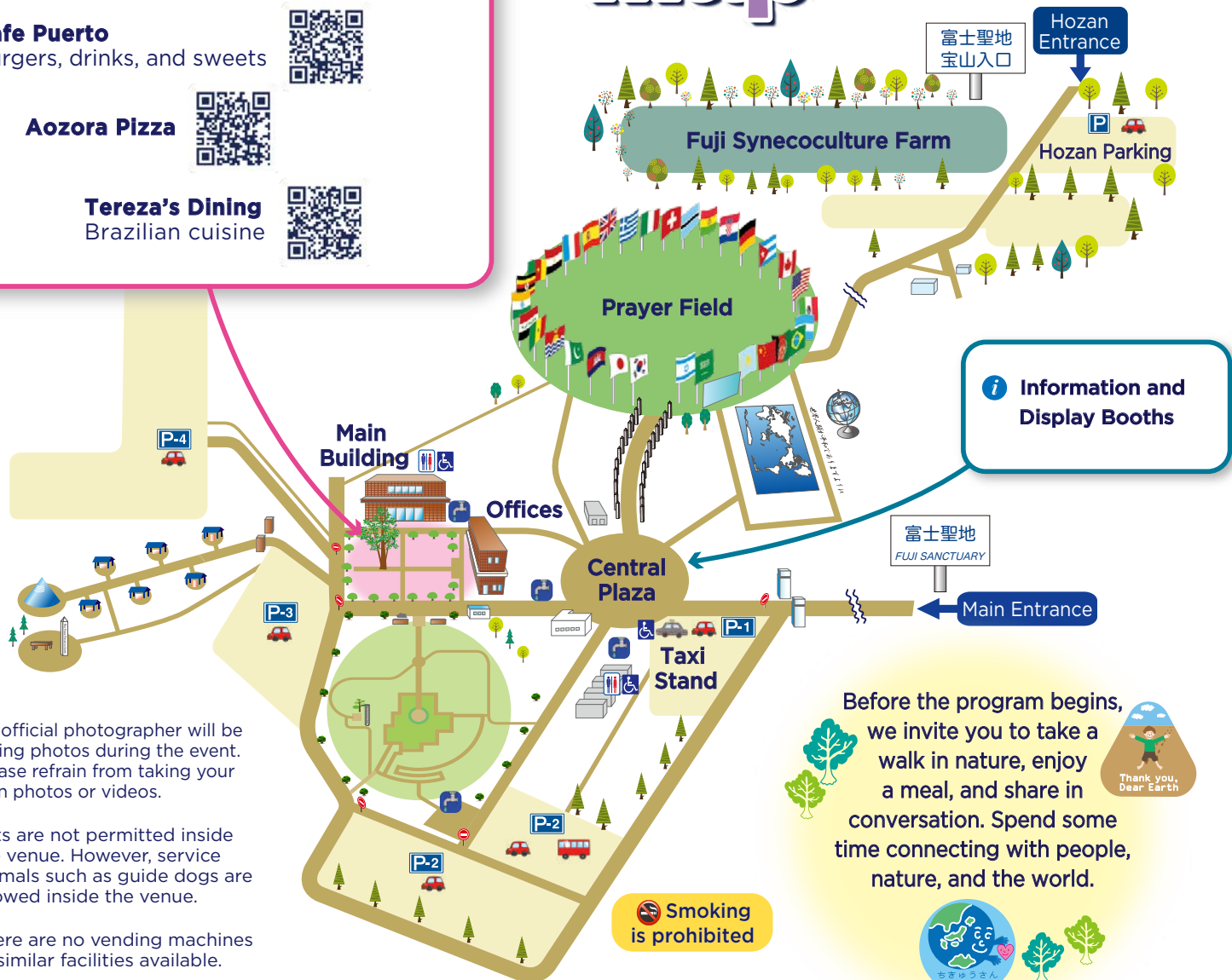


Tereza's Dining

Brazilian cuisine



Map of Fuji Sanctuary



★ An official photographer will be taking photos during the event. Please refrain from taking your own photos or videos.

★ Pets are not permitted inside the venue. However, service animals such as guide dogs are allowed inside the venue.

★ There are no vending machines or similar facilities available.

Before the program begins, we invite you to take a walk in nature, enjoy a meal, and share in conversation. Spend some time connecting with people, nature, and the world.

Thank you, Dear Earth



Byakko Shinko Kai Fuji Sanctuary

Hitoana 812-1
Fujinomiya, Shizuoka
〒418-0102 Japan
sopp@byakko.org

Getting to Fuji Sanctuary

By car From Shin-Fuji I.C.: 50 min.
From Kawaguchiko I.C.: 40 min.

By taxi From Kawaguchiko Sta.: 40 min. (-10,000 yen)
From Fujinomiya Sta.: 35 min.
From Shin-Fuji Sta.: 60 min. (-12,000 yen)



Google Map